

KIT – ERGO THIGH EXTENSION MECHANISM

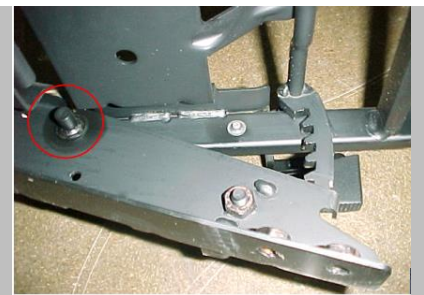
Assembly Instructions

PARTS LIST

2x 30872607
2x 30872807

TOOLS NEEDED

1x Hammer
1x Small Pick
1x Small Flathead Screwdriver
1x Medium Flathead Screwdriver
1x Small Deep Well Socket



View from inboard side

INSTRUCTIONS

STEP 1: Remove push nut from rivet pin on inboard side of cushion frame, by using progressively larger screwdriver under the push nut to loosen. Discard push nut. Repeat on the other side (figure 1).

FIGURE 1



STEP 2: Push rivet pin from cushion frame assembly with a medium screwdriver and a hammer. Remove pin from assembly. Set aside for use during reassembly. Repeat on the other side. (figure 2).

FIGURE 2



STEP 3: Pull the thigh extension free from the cushion frame. Remove small plastic slides from the metal thigh extension frame. Discard plastic slides. (figure 3).

FIGURE 3



STEP 4: Obtain 2 new plastic slides and packet of white lithium grease. Apply grease to new slides. Recommended grease is Super white Lithium 2 165 ISO Viscosity Grade. (figure 4).

FIGURE 4



STEP 5: Align slides to thigh extension frame via the 2 square windows located in the frame. Carefully replace thigh extension to cushion frame.
NOTE: This is very important to ensure proper durability of the assembly (figure 5).

FIGURE 5



STEP 6: Replace rivet pins on either side of the cushion frame. Fully seat the pins using a hammer. (figure 6).

FIGURE 6



STEP 7: Using small deep-well socket, apply push nuts to rivet pins (figure 7).

FIGURE 7



STEP 8: Test thigh extension for function. Thigh extension should not be loose, and should ratchet past the slide detents as the extension is pulled out and pushed in.

Part numbers: 30872407

Performance Seats, Inc
24801 Capital Blvd , Clinton Twp, MI 48036 USA
Main: +1 800-873-2276